



XTV series XTV 12550



Valve Regulated Lead Acid Battery

Maintenance-Free Sealed Lead Acid Battery with Hybrid Gel technology.
Absorbent Glass Mat (AGM) technology for efficient gas recombination of up to 99%.

General Design for Standby Power Applications at Extreme Temperatures

【Design Life】

Up to 12 Years in Standby Service at 25°C
Eurobat (20°C) : >12 YEARS VERY LONG LIFE

【Operating Temperature Range】

Nominal Operating Temperature : 25°C (77°F)
Discharge : -20°C ~ 50°C (-4°F~122°F)
Charge: -20°C ~ 50°C (-4°F~122°F)
Storage: -15°C ~ 40°C (5°F~104°F)

【Float Charging Voltage】

13.5 ~ 13.8 VDC/Unit at 25°C (77°F)

【Equalization Charging Voltage】

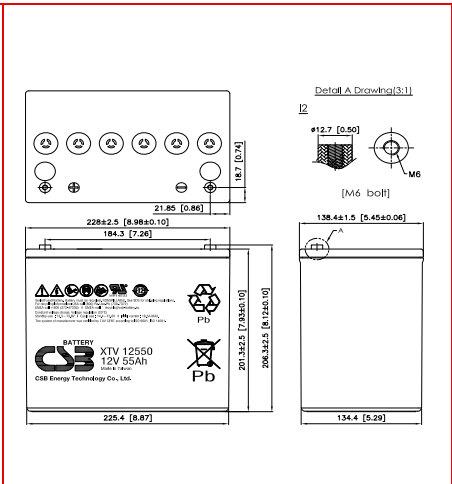
14.4 ~ 15.0 VDC/Unit at 25°C (77°F)

【Self Discharge】

Less than 10% after 90 days, can be stored up to 6 months at 25°C (77°F);
Fully recharging is required before usage, and charged sooner if stored at higher temperature than 25°C (77°F).

Specification Design according with IEC 60896-21/22:2004

Nominal Voltage	12V (6 cells per unit)		
Nominal Capacity	55Ah @20hr-rate to 1.75V per cell @25°C (77°F)		
Weight	Approx. 17.90 Kg (39.45 lbs)		
Maximum Discharge Current	300A (5sec)		
Internal Resistance	Approx. 5.20 mΩ		
Short Circuit Current	1627A		
Maximum Charge Current	16.5A		
Terminal types	I2 thread lead alloy terminal to accept M6 bolt		
Terminal tightening torque	51.7±10.3 Kgf·cm / 44.9±9.0 Lbf·in / 5.1±1.0 N·m		
Container Material	PP (UL 94-HB) & Flame Retardant (94-V0) available upon request		
Dimensions	Length (L)	228.0±2.5 mm	8.98±0.10 inch
	Width (W)	138.4±1.5 mm	5.45±0.06 inch
	Container Height (h)	201.3±2.5 mm	7.93±0.10 inch
	Overall Height (H)	206.3±2.5 mm	8.12±0.10 inch



Constant Current Discharge Characteristics Unit: A (25°C, 77°F)

F.V/Time	5 MIN	10MIN	15MIN	30MIN	60MIN	90MIN	2HR	3HR	5HR	8HR	10HR	20HR
1.60V	247	166	123	71.8	41.0	29.0	22.7	16.2	10.6	6.89	5.58	2.84
1.67V	227	159	119	70.1	40.0	28.5	22.5	16.1	10.5	6.83	5.55	2.80
1.70V	216	155	117	69.5	39.7	28.3	22.4	16.0	10.4	6.74	5.48	2.79
1.75V	194	144	112	67.9	39.4	28.0	22.1	15.8	10.3	6.70	5.41	2.75
1.80V	172	130	105	64.9	38.1	27.3	21.7	15.4	10.1	6.54	5.31	2.73
1.85V	152	113	92.5	60.6	36.2	26.1	20.8	14.8	9.68	6.28	5.09	2.64

Constant Power Discharge Characteristics Unit: W (25°C, 77°F)

F.V/Time	5 MIN	10MIN	15MIN	30MIN	60MIN	90MIN	2HR	3HR	5HR	8HR	10HR	20HR
1.60V	2402	1693	1310	786	460	332	264	188	123	80.9	66.0	34.6
1.67V	2227	1642	1283	780	458	331	261	187	122	80.2	65.6	34.4
1.70V	2150	1590	1268	770	454	330	260	186	121	79.7	65.1	34.2
1.75V	2010	1519	1221	761	451	327	259	185	120	78.7	64.2	33.9
1.80V	1879	1411	1147	734	443	321	255	182	118	77.7	63.4	33.4
1.85V	1613	1279	1030	688	419	309	245	175	115	74.8	61.1	32.3

Please refer to the official site for the latest rating confirmation. URL: www.csb-battery.com

Issued: 220415

Sales Offices

希世比能源科技股份有限公司
CSB Energy Technology Co., Ltd.

BUSINESS HEADQUARTERS

Tel: +886-2-2880-5600
Fax: +886-2-2888-3300

USA OFFICE

Tel: +1-817-244-7777 / 1-(800)3-CSB-USA (272872)
Fax: +1-817-244-4445

SHENZHEN OFFICE (CHINA)

Tel: +86-755-8831-6488/6775/6075
Fax: +86-755-8831-6548

EUROPE (EMEA) OFFICE

Tel: +31(0)180-418-140
Fax: +31(0)180-418-327

SHANGHAI OFFICE (CHINA)

Tel: +86-21-5046-1622/0833/0094
Fax: +86-21-5046-1046

Recognized under UL 1989,
and certified by ISO 9001, 14001, 45001, 50001.



TAIPEI OFFICE

Tel: +886-2-2880-5600
Fax: +866-2-2888-3300

BEIJING OFFICE (CHINA)

Tel: +86-10-6597-8065/8165/8265
Fax: +86-10-6597-8565